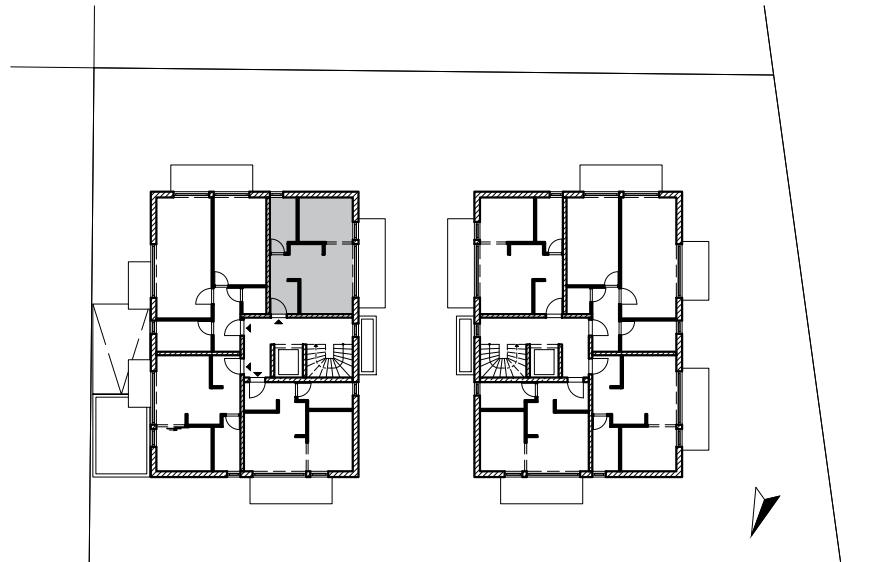
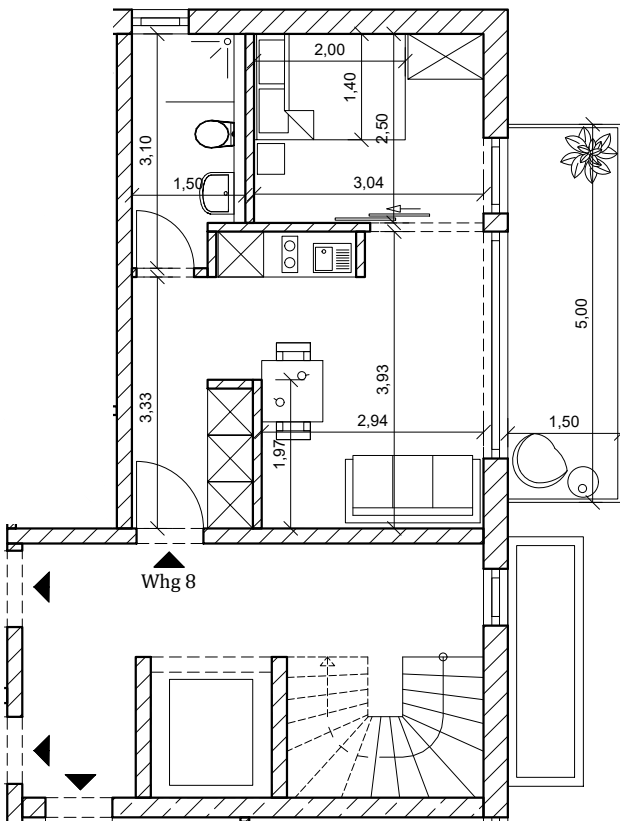


Kiefernstr. 25

Whg 8 - 1.OG | 2 Zi.-Whg.



Kiefernstr.



Wohnen Kochen	17,62m ²
Schlafen	7,70m ²
Bad	4,35m ²
Balkon anteilig 50%	3,75m ²
<hr/>	
Gesamt	33,42m ²

Maßstab
1:100