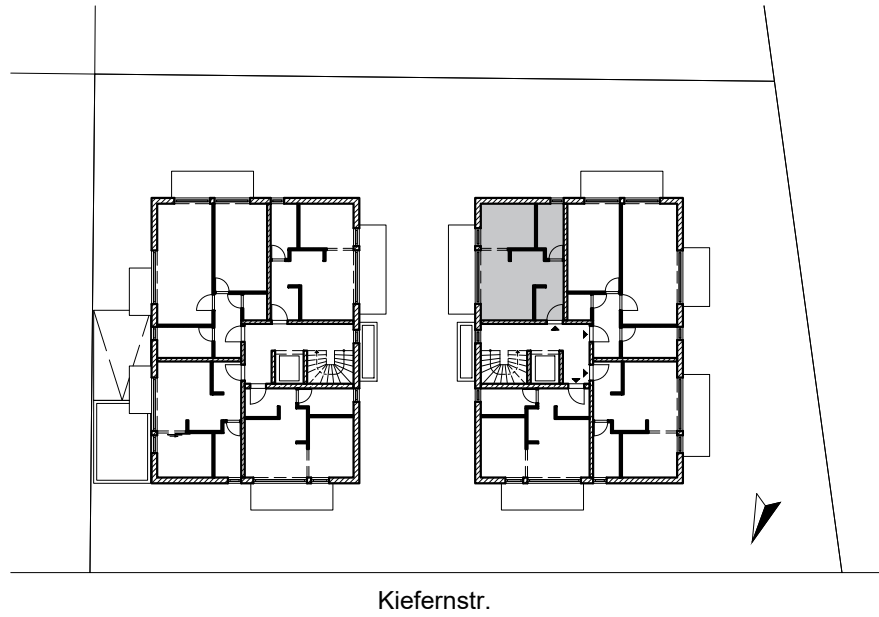
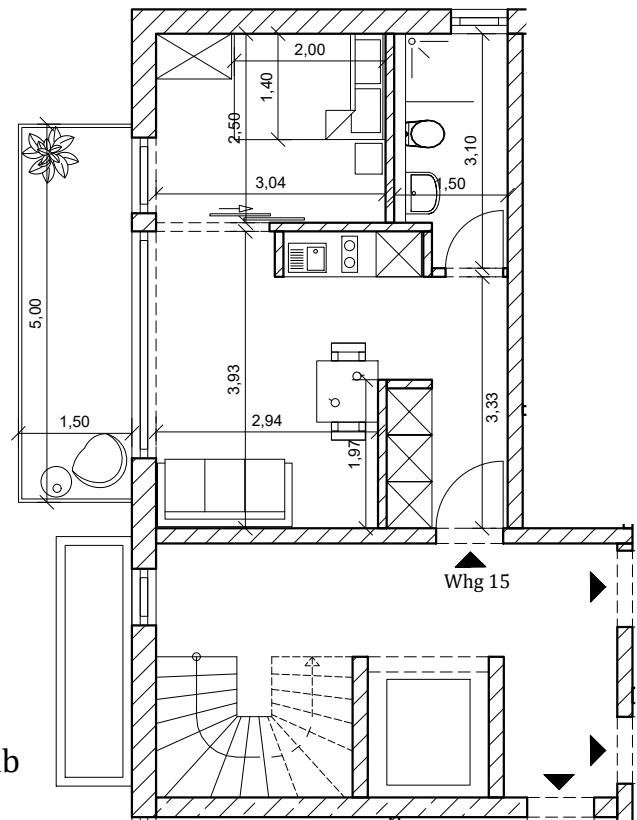


# Kiefernstr. 25a

Whg 15 - 1.OG | 2 Zi.-Whg.



Wohnen   Kochen	17,62m <sup>2</sup>
Schlafen	7,70m <sup>2</sup>
Bad	4,35m <sup>2</sup>
Balkon anteilig 50%	3,75m <sup>2</sup>
<hr/>	
Gesamt	33,42m <sup>2</sup>



Maßstab  
1:100