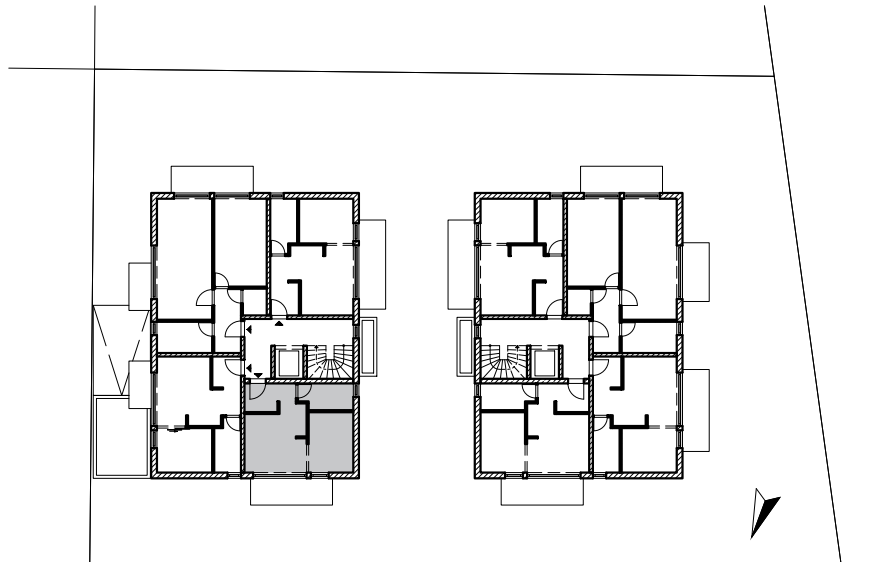
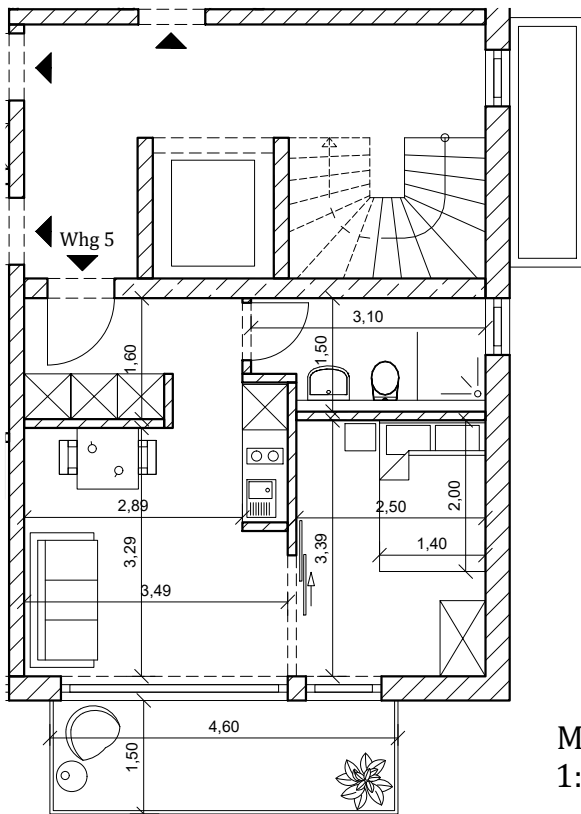


Kiefernstr. 25

Whg 5 - 1.OG | 2 Zi.-Whg.



Kiefernstr.



Wohnen Kochen	16,79m ²
Schlafen	8,57m ²
Bad	4,35m ²
Balkon anteilig 50%	3,45m ²
<hr/>	
Gesamt	33,16m ²

Maßstab
1:100