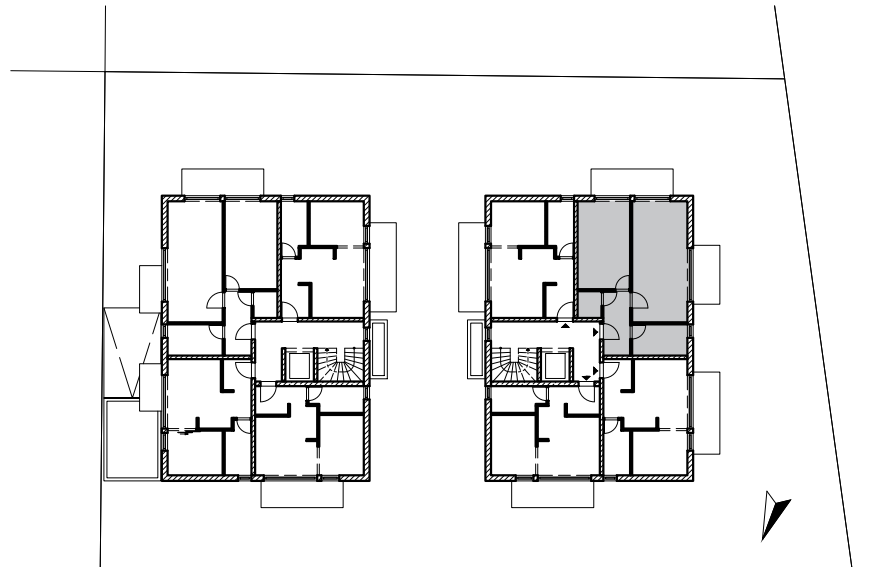


Kiefernstr. 25a

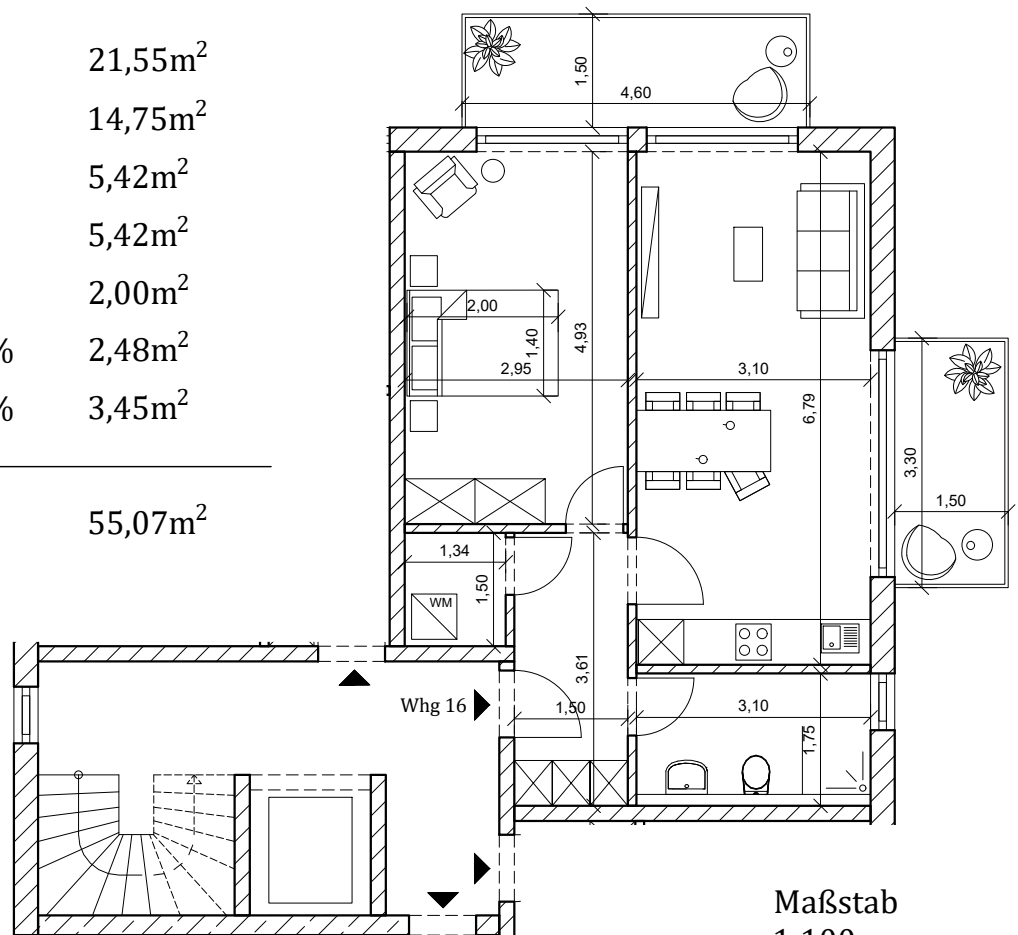
Whg 16 - 1.OG | 2 Zi.-Whg.



Kiefernstr.

Wohnen Kochen	21,55m ²
Schlafen	14,75m ²
Bad	5,42m ²
Diele	5,42m ²
HWR	2,00m ²
Balkon anteilig 50%	2,48m ²
Balkon anteilig 50%	3,45m ²

Gesamt 55,07m²



Maßstab
1:100